



TOWARDS A BETTER WORLD

Corporate Social Responsibility

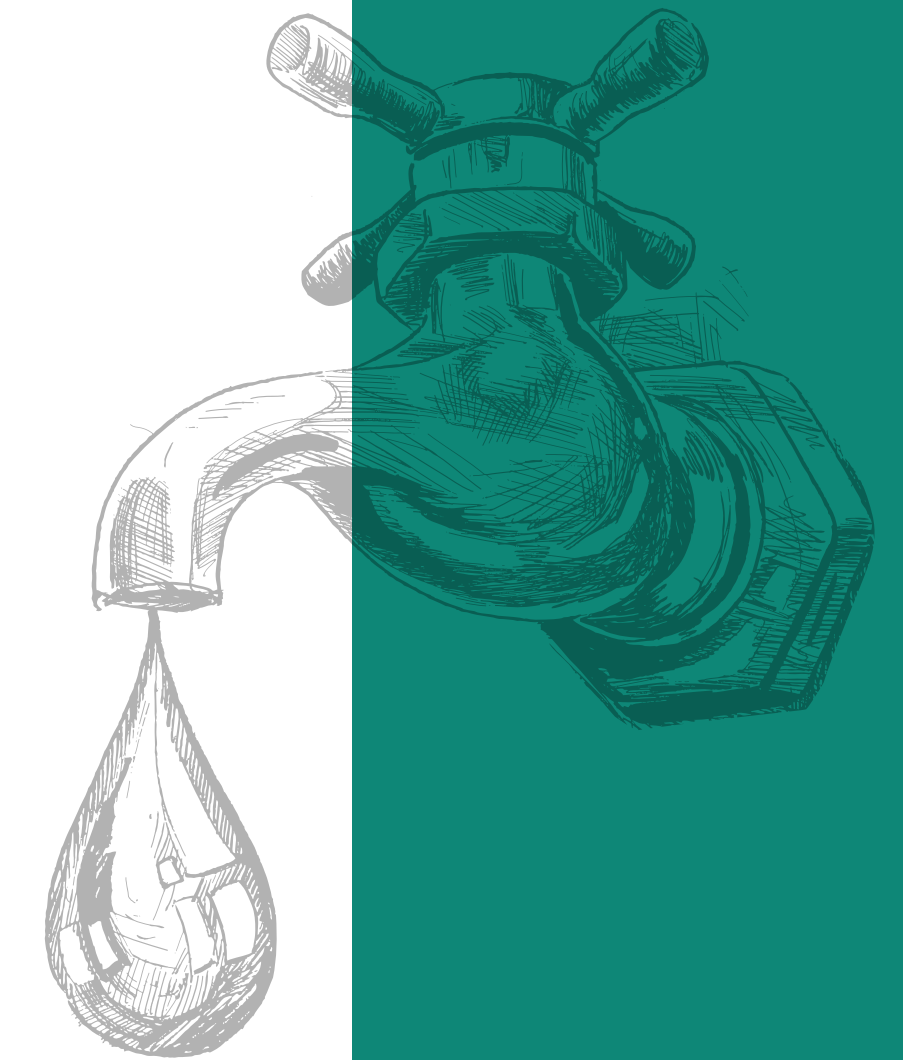
LITTLE EFFORTS TO SPREAD **pure happiness**



1 Million families impacted so far...

BY 2025, WATER SHORTAGE CAN IMPACT 1.8 BILLION LIVES

*source: www.un.org



BUT WHO SAID WE CANNOT CHANGE THE FUTURE?

By practising Zero Liquid Discharge, we recover 1900 million liters (500 million Gallons) of water every year. We closely watch our water consumption keeping it 25% less than global benchmark and recycling it at every step.



SINCE 1970, CO₂ EMISSIONS HAVE INCREASED BY ABOUT 90%

*source: www.epa.gov



A CIRCULAR APPROACH TO FOOD WASTAGE

Our Biogas plant in Budhni converts canteen waste into energy thus managing wastes that will otherwise have adverse consequences



EVERY YEAR, WE LOSE **18.7 MILLION ACRES OF FORESTS**

*source: www.worldwildlife.org

THE LOSSES AREN'T IRREVERSIBLE, IF ONLY WE ACT TODAY



We save 5,000+ trees every day by using wheat straw as the main raw material for our paper manufacturing process. We have a green belt area of more than 600,000 trees inside our premises.



BY 2100, 216 MILLION PEOPLE WILL BE LIVING BELOW SEA LEVEL

*source: www.mnn.org



BUT, BY CURBING CO₂ EMISSIONS, WE CAN CONTROL THE DAMAGE

Our wheat-straw based paper is made at less than half the CO₂ emission as wood-pulp based paper.

Each day we save CO₂ emissions equivalent to driving a car for 4.2 Million Miles.



EVERY YEAR, AIR IS POLLUTED BY 43 MILLION TONS OF PESTICIDE LADEN DUST

*source:www.theworldcounts.com



BETTER COTTON INITIATIVE CAN COME FOR THE RESCUE

Under BCI, we have partnered with 17,498 farmers to minimize pesticide usage in cotton cultivation practices, save water during irrigation and upgrade their economic stature.



GLOBALLY, 500 MILLION WOMEN LACK BASIC HYGIENE FACILITIES

*source: www.who.org
www.worldbank.org



BUT, AWARENESS AMONGST WOMEN CAN CHANGE THE SCENARIO

We help women understand the importance of menstrual hygiene through multiple initiatives. We have installed vending machines at our locations from which women can obtain sanitary napkins for free.



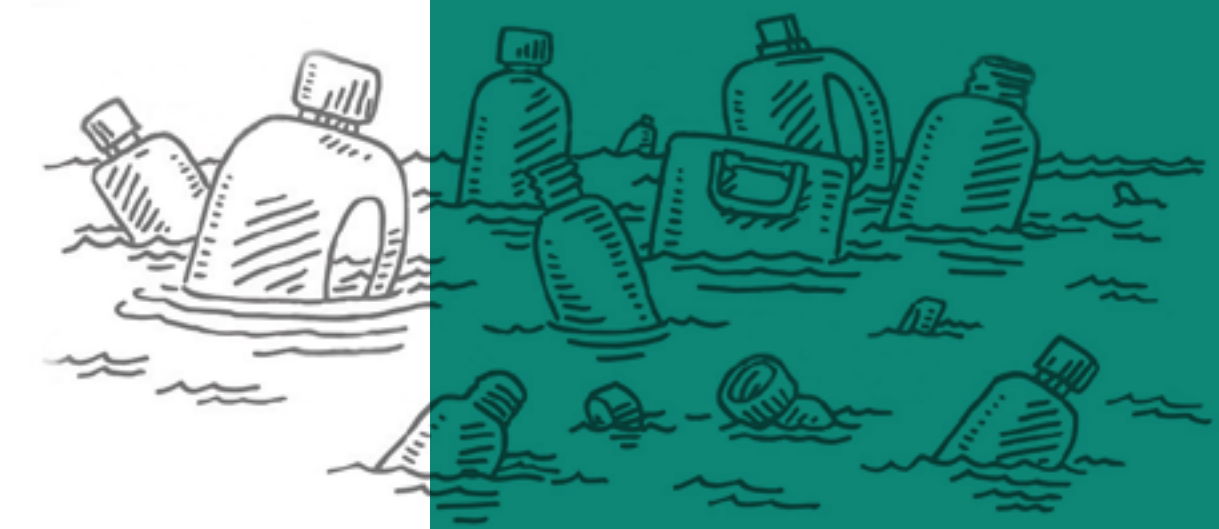


**let's
act
wisely**

*Image source: National Geographic

14 BILLION POUNDS OF PLASTIC IS DUMPED INTO THE OCEAN EVERY YEAR

*source: www.who.edu



CLEANING RIVERS ADDRESSES THE PROBLEM AT THE SOURCE

To keep river Narmada clean, we run 'Nirmal Narmada Abhiyaan' every quarter with voluntary participation from hundreds of employees and local residents.



115 MILLION CHILDREN ARE NOT ENROLLED IN SCHOOL

*source: www.un.org



In English means literate

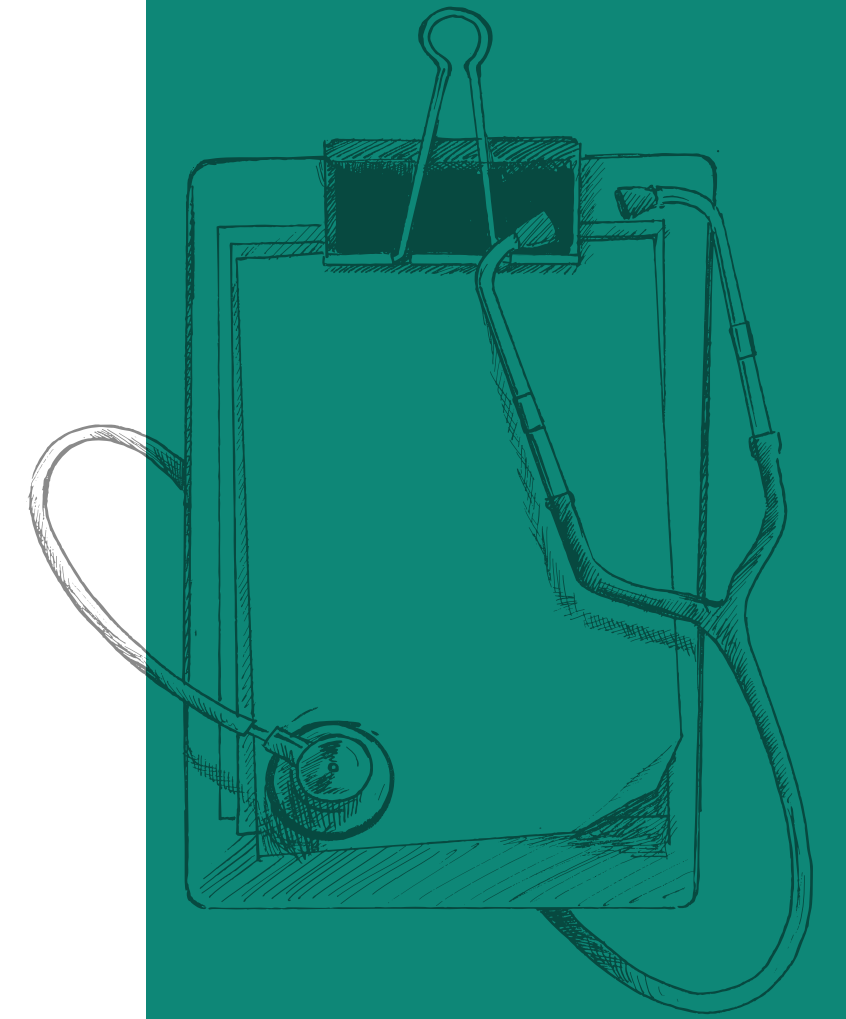
EDUCATION IS THE BASIC RIGHT OF EVERYONE

We support schools and anganwadi centers by revamping existing facilities, providing infrastructure and ensuring the availability of basic facilities.



1 BILLION PEOPLE GLOBALLY DO NOT HAVE ACCESS TO HEALTH CARE

*source: www.un.org



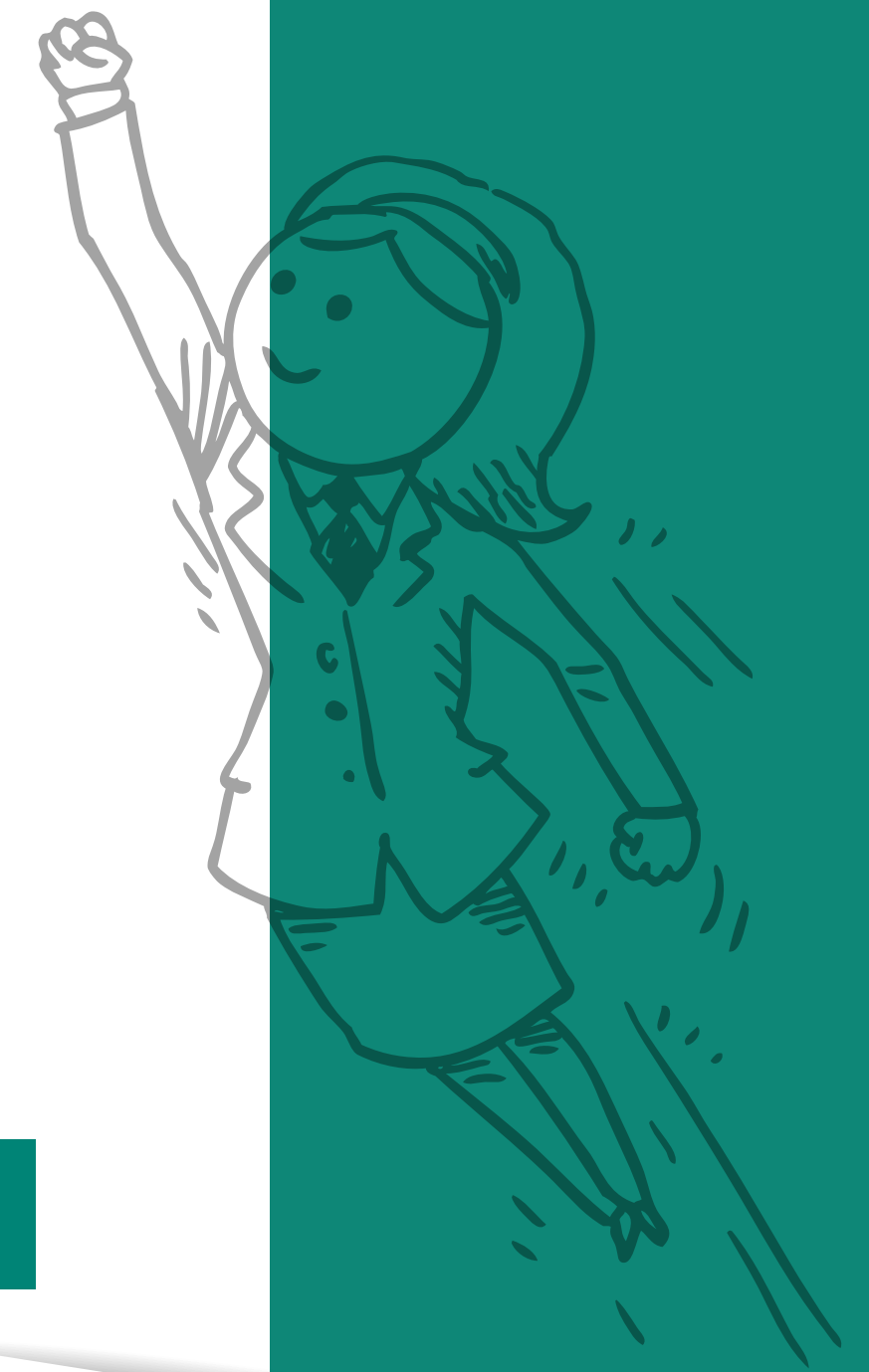
CLOSING THE HEALTH GAP UNLOCKS LIMITLESS HUMAN POTENTIAL

We reach out to more than 100,000 people living in rural areas through health camps and check ups every year and provide them free consultation and medicines from experienced doctors.



WOMEN'S UNEMPLOYMENT IS CURRENTLY AT A 24-YEAR HIGH

*source: www.un.org



IT'S POSSIBLE TO WELCOME THEM BACK TO THE LABOR FORCE

To make women financially independent, we provide them with sewing machines and free handicrafts-making training under our Hastakala initiative.

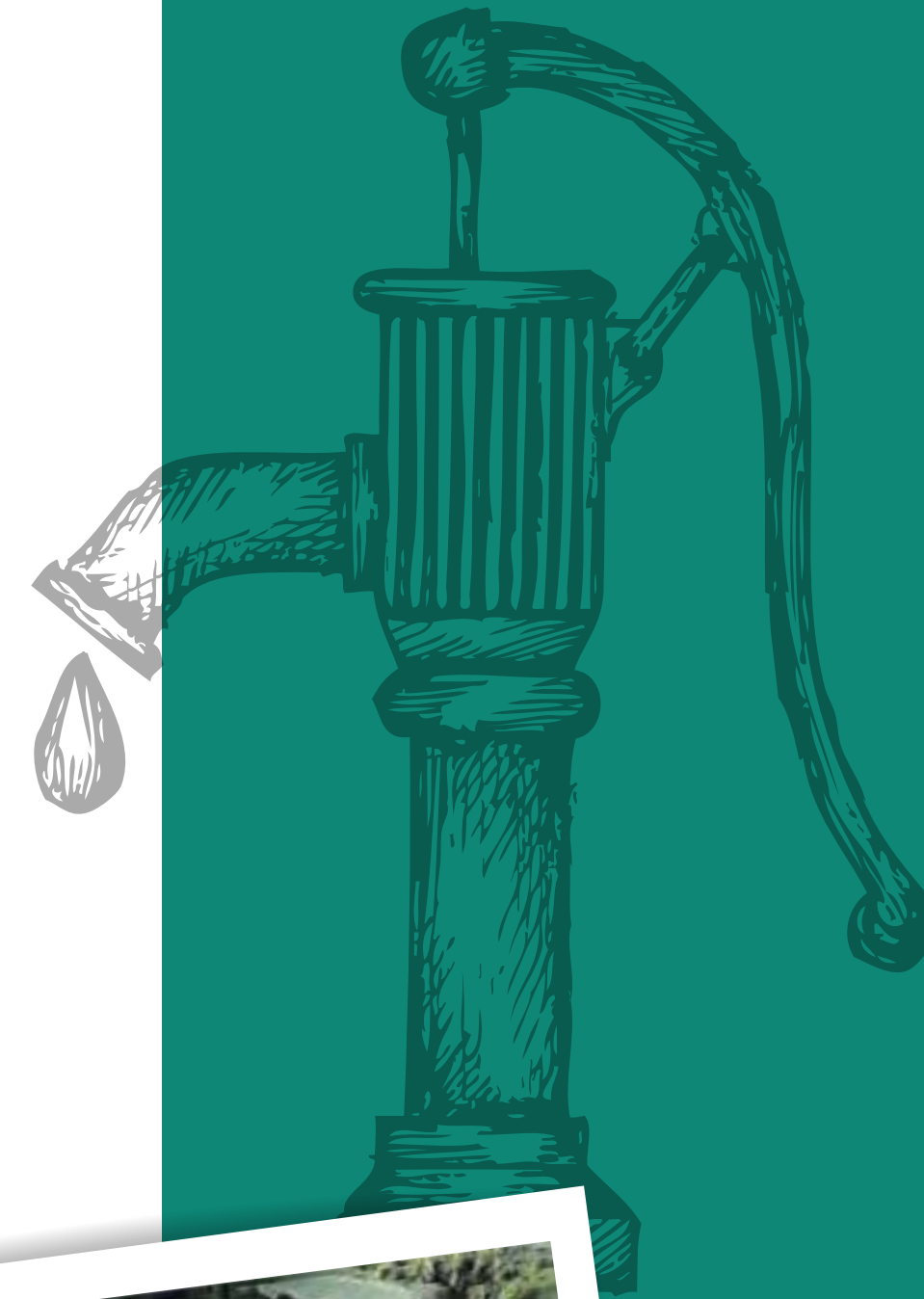


In English means
'handcrafted'



CONTAMINATED DRINKING WATER CAUSES 485,000 DIARRHOEAL DEATHS EACH YEAR

*source: www.who.int



EVERY SINGLE DROP OF EFFORT COUNTS

We have installed hand pumps in villages to ensure the availability of clean drinking water, benefitting more than 5,000 households.



स्रोत

In English means
'source'

THE PLANET IS CHANGING,
IT'S TIME THAT WE DID TOO!

